

  
*Maserati*



*Grecale*





Grecale *Modena*

**Endless possibilities | 6**

Discover the Grecale Collection

**A distinctive invitation | 22**

Experience something truly unique in a world of standardized choices

**High-powered Luxury | 26**

Maserati Connect and Safety ADAS

**Fuoriserie | 48**

Your Maserati tailor-made to your unique personality

**Technical specifications | 54**

Specifications overview of all Grecale versions

**A world of possibilities | 58**

*Everyday* **Exceptional**





Grecale Modena



Grecale Trofeo

## Bold *beyond* trends

Naming cars after the most famous winds in the world is a tradition at Maserati. It continues with a new SUV, named after the fierce northeast wind of the Mediterranean Sea: The Grecale.

Cosmopolitan and modern. Italian and timeless. Out of this creative tension comes the all-new Grecale. Its sculpted lines fuse essential iconic design elements with an audacious, futuristic outlook. Purity of shape, free of ostentation. Exceptional never follows trends.



Grecale GT



L4 Engine - Grecale GT, Modena



The new Grecale is powered by the spirit of everyday adventure with everything you would expect of a Maserati SUV.

An innovative display of Maserati performance. The Grecale features only our latest engine capabilities. Besides the 300 or 330hp mild hybrid propulsion comes the super powerful yet efficient 530hp V6 Nettuno engine.

***Endless* possibilities**

V6 Engine - Grecale Trofeo





# Three new trims for a *unique encounter*

Three exclusive new trims have been introduced as part of the new Grecale Range. In terms of style, the new **GT, Modena and Trofeo** trims introduced a **new Maserati logo** on the hood and a **new specific badge for each trim version** placed just above the three iconic side air vents. At the rear, the traditional saetta logo has been replaced by a new Trident logo on the C-pillar, while a new Maserati script takes stage on the trunk.

## GT

Maserati, with the GT trim, is thinking about Cosmopolitan Characters with a Dynamic Lifestyle who seek something in Materials and Textures that will evoke a Feeling of Home even when driving long distances.



## Modena

Modena trim is made for people whose lifestyle is sportier and spend more time outdoors following their passions. For the Modena trim, the Brand has in mind people who cover high mileages, use their car for travel, a highly dynamic person, always on the move.

## Trofeo

Trofeo trim is made for drivers who adore sports and great performances. A cool appearance paired with an engine of irresistible power. The exposed carbon fiber has a texture verging on the three dimensional, the tactile look evokes almost a raw material effect.








# The Grecale *Collection*

One choice, many possibilities to distinguish yourself.



Grecale *GT*

	Max power	Max speed	Acceleration	Engine layout	Traction	Max torque
<b>Grecale <i>GT</i></b> 	<b>300</b> HP	<b>240</b> km/h	<b>5.6</b> <sup>sec</sup> 0-100 km/h	<b>L4</b>	<b>AWD</b>	<b>450</b> Nm
<b>Grecale <i>Modena</i></b> 	<b>330</b> HP	<b>240</b> km/h	<b>5.3</b> <sup>sec</sup> 0-100 km/h	<b>L4</b>	<b>AWD</b>	<b>450</b> Nm
<b>Grecale <i>Trofeo</i></b> 	<b>530</b> HP	<b>285</b> km/h	<b>3.8</b> <sup>sec</sup> 0-100 km/h	<b>V6</b>	<b>AWD</b>	<b>620</b> Nm



# Grecale GT-Everyday Exceptional

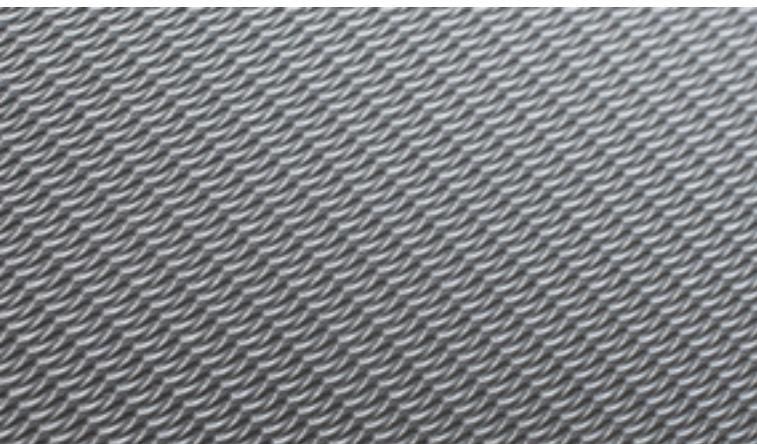
Find out more about [Grecale GT](#)



Side air vents and GT Badge



Headrest detail



Maglia Milano

The GT trim, powered by a four-cylinder mild hybrid engine capable of delivering 300hp, elegantly underlines the original Maserati charm and elegance. The exotic details of the Grecale GT gracefully express the Brand's passion for luxurious details and ever-so-visible Italian style.

Innovative laser processing re-interprets the iconic Maglia Milano, taken from fine jewelry and watchmaking. Standard aluminum paddle shifters underline the sporty soul of the Grecale.



<b>300<sub>HP</sub></b>	<b>240<sub>km/h</sub></b>	<b>5.6<sub>sec</sub></b>	<b>L4</b>	<b>AWD</b>	<b>450<sub>Nm</sub></b>
Max power	Max speed	0-100 km/h Acceleration	Engine layout	Traction	Max torque



# Grecale Modena-Everyday Exceptional

Find out more about [Grecale](#)



Side air vents and Modena Badge



Trident logo on C-pillar



Exhausts

An innovative display of Maserati performance.

For the sporty soul who is always on the move. Inspired by Italian architecture, the interiors feature an embroidered graphic motif combined with a rare, gray tone wood with an open-pore finish enhances the tactile experience. The body features 20" alloy wheels (21" optionally), gloss black finish logos, front splitter, grille, window shades and inserts on the side skirts and dark exhausts.



**330** HP  
Max power

**240** km/h  
Max speed

**5.3** sec  
0-100 km/h  
Acceleration

**L4**  
Engine layout

**AWD**  
Traction

**450** Nm  
Max torque



# Grecale Trofeo - The Art of Fast

Find out more about [Grecale Trofeo](#)



Side air vents and Trofeo Badge



Headrest detail



Carbon fiber

Exceptional driving, every day, anytime. Lightweight construction, combined with high-performing engines makes for a pulse-quickening ride. The driveshaft made in carbon fiber and the extensive use of materials like aluminum contribute to a top-class power to weight ratio, acceleration, and speed. Such as the exposed, three-dimensional carbon fiber and perforated leather pair with chevron motifs intensifying the car's dynamism.



**530**HP  
Max power

**285**km/h  
Max speed

**3.8**sec  
0-100 km/h  
Acceleration

**V6**  
Engine layout

**AWD**  
Traction

**620**Nm  
Max torque





Folgore

**Folgore: *electrification* the Maserati way**

An energy 100% full electric that will project the Trident into the future.





Grecale Modena



Grecale Trofeo



Grecale GT



Grecale GT



Grecale Trofeo



Grecale Modena



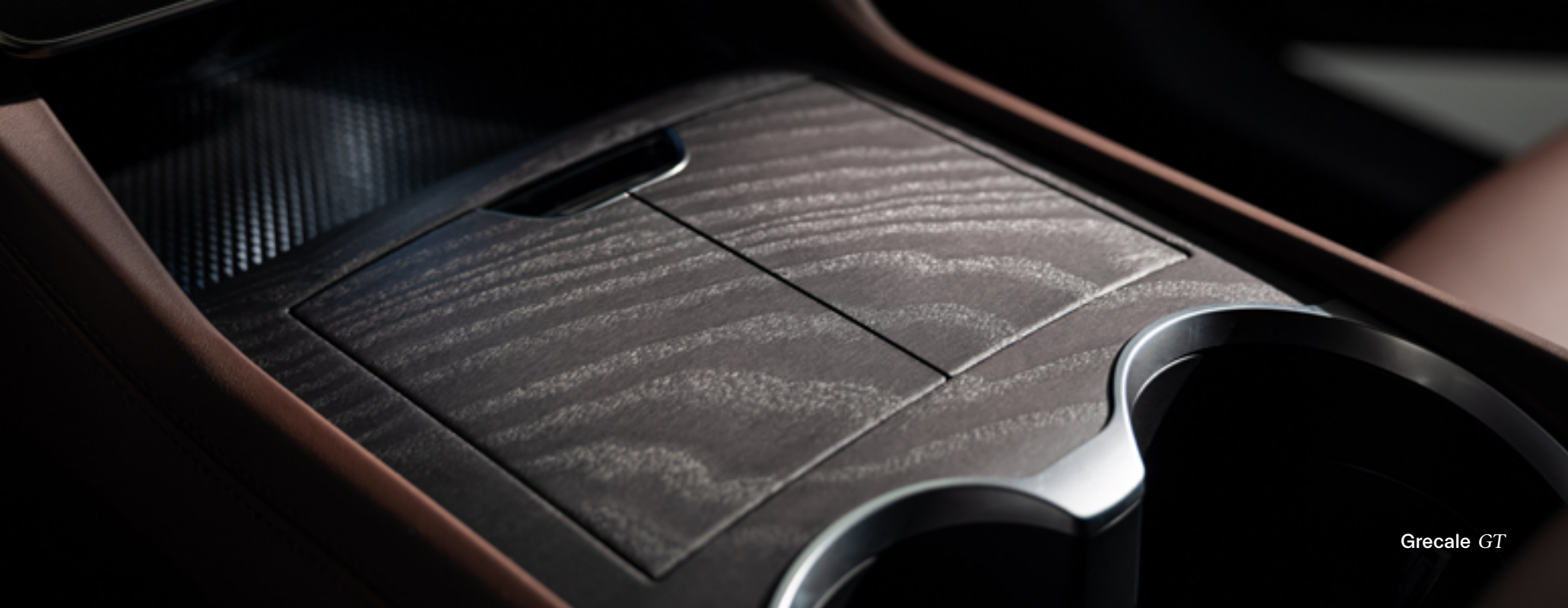


The Grecale embraces a new luxury paradigm made of tradition, innovation, and concrete vision. Every detail has a purpose. Every function expresses emotion, down to the smallest details.

Aesthetic purity continues in the interiors where digital minimalism blends with handcrafted engineering. This is where our heritage, territory and sartorial excellence gets reinterpreted through innovative processing of colors, textures, materials, and finishes.

# *A distinctive invitation*





*Grecale GT*



*Grecale Trofeo*



*Grecale Trofeo*



*Grecale Modena*



*High-Powered* **Luxury**

Grecale *Modena*



Grecale *Trofeo*





Grecale Modena

**Turn back:**

Inspired by the Giugiaro 3200 GT, the boomerang shaped taillights integrate seamlessly with the Grecale's clean lines. On the lower, more technical part, the newly designed exhausts visually describe the roaring Maserati sound.

**Distinctive signs:**

The triple side air vents have been an essential element in Maserati designs since 1947. In the Grecale they go with the trim version names: GT, Modena or Trofeo.



Grecale Modena

**A bold look forward:**

Led technology with a design signature derived from the Maserati MC20 super sports car. The Grecale's headlights perfectly fit with its more vertical body shape.



Grecale Modena





**Air suspensions:**

From road-hugging to off-road riding. The air suspensions, standard on the Trofeo and optional for other versions, can be calibrated through six levels according to your drive mode and needs. When the car is parked, the changed height makes it easier to get in and get out.

**Go your own way:**

What's your mood today? What are you up to? From COMFORT to GT, from SPORT to OFF-ROAD: just select your drive mode and go. If you own a Trofeo and you are looking for maximum performance, select CORSA mode with Launch Control: bellissimo.







Grecale Modena

**MIA (Maserati Intelligent Assistant):**

With the customizable Maserati Intelligent Assistant (MIA) powered by Android Automotive OS, you can access its many controls on the large 12.3" screen: navigation, media, drive modes, vehicle settings, apps and more. Everything is just one swipe away.

**Comfort display:**

8,8" Comfort display enables easy-access to the majority of Grecale's features and personalization (Lights command, Seats vents and heating, Air conditioning, Ambient lighting). With smart gestures control, the 8,8" Comfort display is set to higher the safety level on the car, keeping the driver's focus on the road without having to search for climate settings on the display.

**Instrument cluster:**

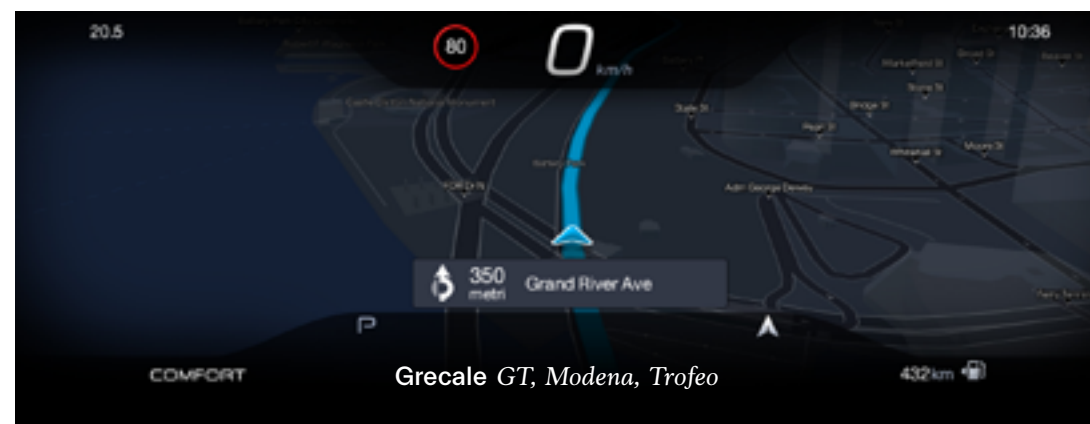
The 12.3" TFT Digital Cluster has been designed to ensure full visibility in any condition and for any driver. Four configurations are available: Classic, Evolved, Relaxed and Corsa (Trofeo only).

**Future o'clock:**

Classic frame, progressive technology. Time has come to renew a distinctive detail. The iconic mechanical clock has turned into a digital smartwatch whose style changes according to your taste. Not only does it tell the time, it also becomes a driver-car interface that enables smart vocal interactions.



Grecale Trofeo



Grecale GT, Modena, Trofeo



Grecale Trofeo





**All clear above:**

The Grecale's sunroof in tinted safety glass – standard on the Trofeo version – is power-controlled and can be in the “open”, “vent” or “close” position. The interaction between light and material is sublime.

**Form is function:**

The central panel free of buttons and gear lever makes room for the spacious armrest, two ample cup holders, a large storage compartment with double butterfly doors, and a mobile phone charging area.







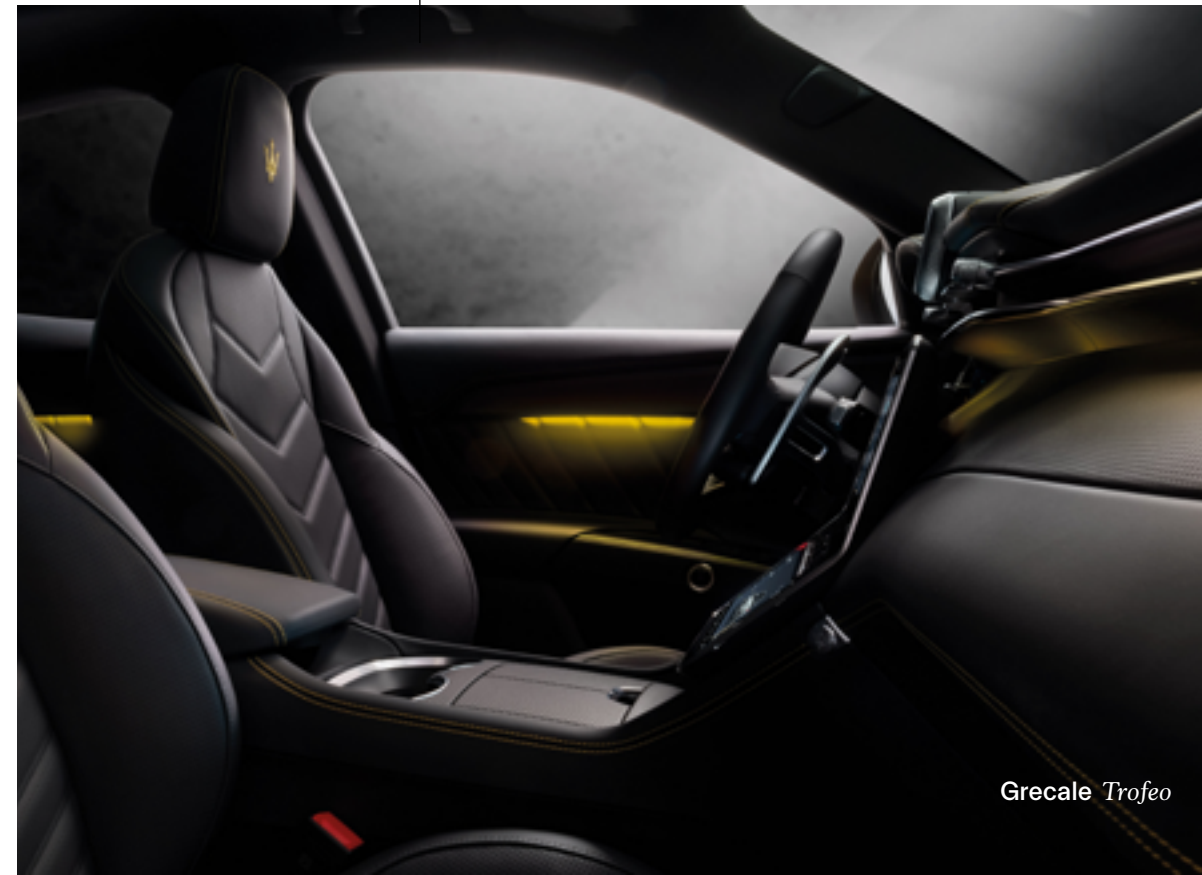
*Grecale Modena*

**Take your seat:**

The interiors of the Grecale are a fusion of functionality and luxury. The interior is inspired by the concept of a clean, modern and emotive design, with room for new technology.

**Ambient lighting:**

Soft diffused lighting with three available levels of intensity creates a refined living room effect. Lights turn red when in Sport mode and yellow when in Corsa mode (Trofeo version only).



*Grecale Trofeo*



*Grecale Trofeo*





Grecale GT

**Superior interior space:**

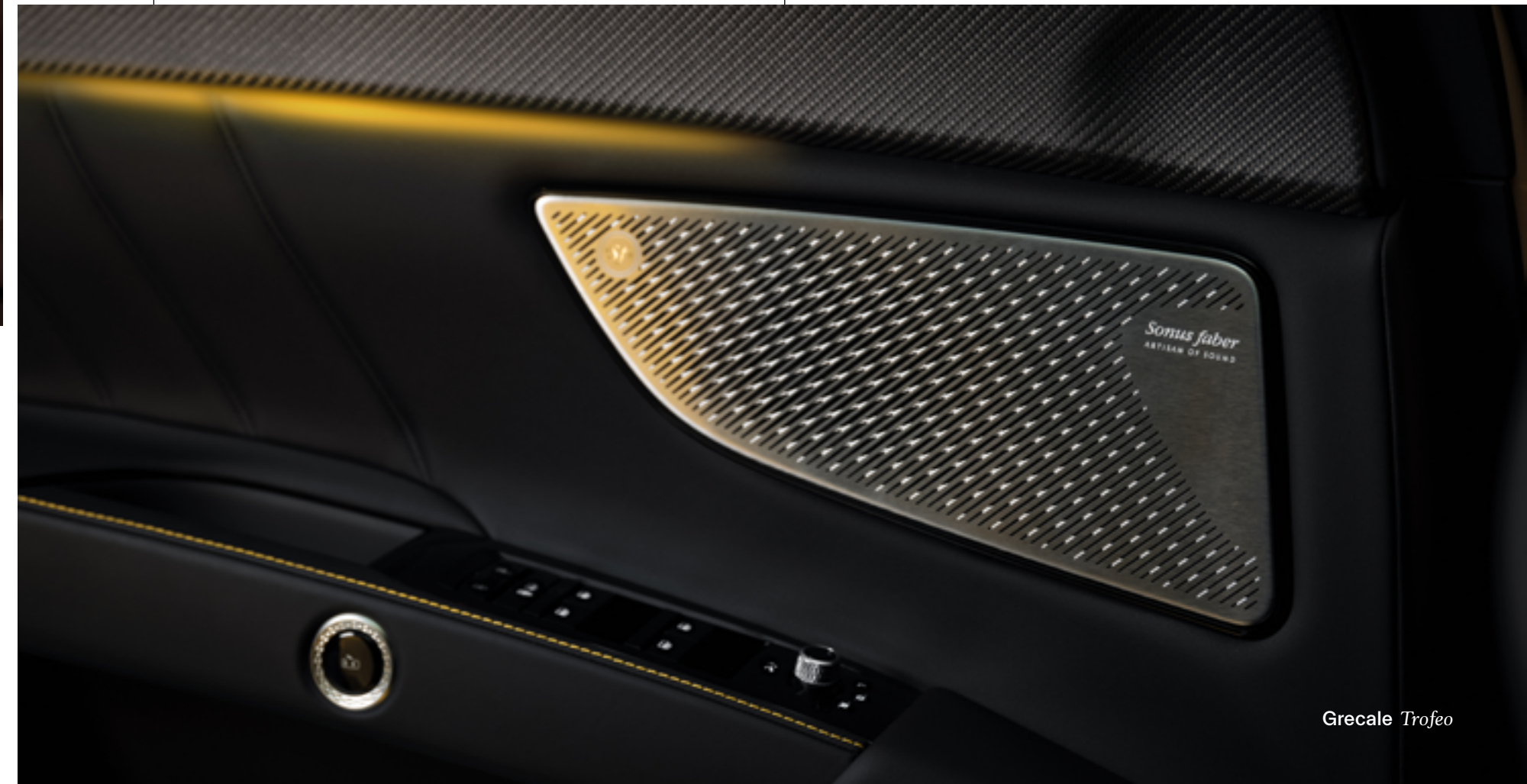
Your comfort, our obsession. The all-new Grecale SUV is best in class for cabin space maximizing its volume through streamlined, functional design.

**Sonus faber sound system:**

The engine note of the Grecale needs the best in-car sound system to match. The partnership with Sonus faber, Italian Artisans of Sound, provides a breathtaking listening experience with their audio systems for the Grecale.

**The voice of Sonus faber:**

The outstanding sound balance in the cabin is achieved through natural materials, exclusive speaker design and bespoke subwoofer technology. With excellent insulation from outside noise, the Grecale offers the perfect stage for a 360° music experience.



Grecale Trofeo



# Connect to *your everyday*

Enjoy the luxury of being in control, anytime and anywhere you desire through your smartphone, smartwatch or virtual assistant. Maserati Connect: a seamless, smart and digital everyday experience in and around your Grecale.

## Connected care:

Maserati connect is at your service and will keep you posted on the health of your Maserati and even reminds you of your next service. In case of emergency, dedicated support is provided when you need help along the trip or in case of theft of the car.



## Smart, connected:

Your Maserati as part of your smart ecosystem. Just ask Alexa or Google Assistant for your vehicle status, or to send a destination to your always-updated navigation. Communicating with your car from your couch is that simple. With In-Car Alexa, you can ask to play music, hear the news, check the weather, control smart home devices, and more.

## Wi-Fi and Navigation:

Enjoy the 12.3" Head Unit while navigating with the latest maps and real-time traffic information, and receive updates about weather and parking availability at destination, made easy to find with Street View. Activate the on-board Wi-Fi hotspot and browse and stream on up to 8 devices.



# Advanced Driving Assistance System

The Grecale is equipped with a comprehensive range of Level 2 Advanced Driving Assistance Systems, the highest level of driving automation support available on the market.



Grecale Trofeo

## **Cruise Control**

Cruise control allows the driver to maintain a fixed desired speed.

## **Adaptive Cruise Control**

As an upgrade to standard Cruise Control, the adaptive functionality is available as an optional. Adaptive Cruise Control automatically adapts the vehicle speed in order to maintain a safe selected distance from vehicles ahead. The maximum speed available is 210 Km/h.

## **Park Assist with rear active braking**

Grecale is equipped with front and rear parking sensors as standard. In addition to Park Assist functionality, the vehicle will automatically brake to avoid damage on bumper in parking procedures.

## **Rearview Camera with Dynamic Gridlines**

Grecale offers the Rear Parking Camera with Dynamic Gridlines as a standard content. This system helps the driver when parking or during tight maneuvers. In combination with the rear parking sensors, the system both visually and acoustically alerts the driver to any potential objects or obstructions.

## **Surround View Camera**

The Surround View Camera, offered as an optional, allows the driver to have an excellent visibility of each side of the car thanks to cameras and sensors located in specific car areas.

## **Active Lane management**

Offered as an option, it provides steering correction to help the driver avoid a collision with the other vehicle and reduces stress for the driver when in traffic.

## **Traffic Sign Recognition**

Offered as an option, it is a front facing camera which recognizes speed limits, related traffic signs and provides alerts to the driver.

## **Drowsy driving detection**

Offered as optional content, the Drowsy driving detection monitors the driver's drowsiness. If the system detects signs of drowsiness, the driver is alerted to recommend rest.

## **Intersection Collision Assist**

Offered as optional content, the Intersection Collision Assist detects risk of collision with intersection cross-traffic. It provides warning to the driver of risk and mitigates risk of collision through auto emergency braking, when appropriate.

## **Intelligent Speed Assist**

Intelligent Speed Assist (Speed Limiter & TSR) allows the driver to set a maximum speed and, in pair with traffic sign recognition, set a maximum speed following road signs.



### **Automated Emergency Braking with Pedestrian/Cyclist Recognition**

The system shall warn the driver of a potential forward collision; it will prompt the driver to take action through audible and visual warning, finally it could trigger a braking force in an attempt to help the driver mitigate or avoid the collision.

### **Blind Spot Monitor and Rear Cross Path (RCP)**

Grecale offers the passive Blind Spot detection and Rear Cross Path functions as optional content. The Blind Spot monitors the detection zones on both sides of the vehicle and alerts the driver when a vehicle enters one of the blind spot zones. The Rear Cross Path function is intended to aid the drivers when backing out of parking spaces where their vision of oncoming vehicles may be blocked.

### **Active Driving Assist**

Active Driving Assist is an extension of Maserati Highway Assist. Different from Highway Assist which operates on limited access freeways only, this new system is supported on every road condition. Of course, the driver is required to stay engaged while driving since he/she is still legally responsible for the driving and must always supervise the driving conditions and be ready to maintain full control of the car at any given moment if necessary.

### **Virtual Wall**

The Virtual Wall is a feature meant to help the driver during parking maneuvers. It displays the obstacle detected by Parking sensors in the form of colored transparent virtual blocks.



Grecale GT



# Build *Your Own*

Every Maserati is like a **work of art** constructed with the care and attention that only the human hand can provide. Build your own Maserati Grecale and **customize** it to fit your needs.





Your Maserati is tailor-made to your unique personality. Fuoriserie is the distinctive Maserati personalization program that allows you to create one-of-a-kind Maserati cars, styled by you. Unleash your audacity, set your own rules.

 *Maserati*  
*FUORISERIE*





# Made to measure *Collections*

Find out more about [Fuoriserie](#)

Two bold Collections, an infinite range of possibilities. Start from a core value that drives you, either performance, contemporary style or innovation, and explore the myriad combinations to find the Maserati that best represents your true spirit.

## **CORSE**

Dedicated to lovers of timeless style, the 'Gentleman Racer' era, and faithful connoisseurs of the Maserati narrative. The Corse Collection is inspired by our glorious racing heritage.



## **FUTURA**

Dedicated to futurists, lovers of technology and new materials, people who embrace and encourage change with enthusiasm and energy. For people who know the best is yet to come.









# Technical *specifications*



DIMENSIONS AND WEIGHTS	GRECALE GT	GRECALE MODENA	GRECALE TROFEO
Length	4846 mm	4847 mm	4859 mm
Width (with side mirrors)	2163 mm	2163 mm	2163 mm
Width (without side mirrors)	1948 mm	1979 mm	1979 mm
Height	1670 mm	1667 mm	1659 mm
Wheelbase	2901 mm	2901 mm	2901 mm
Turning circle	12.4 m	12.4 m	12.4 m
Boot capacity	535 l	535 l	570 l
Fuel tank capacity	64 l	64 l	64 l
Homologated Weight	1870 kg	1895 kg	2027 kg
<b>ENGINE</b>			
Number of cylinders and layout	L4 MHEV	L4 MHEV	V6 90°
Displacement	1995 cc	1995 cc	3000 cc
Bore	84 mm	84 mm	88 mm
Stroke	90 mm	90 mm	82 mm
Compression ratio	9.5:1	9.5:1	11:1
Max. power output	300 CV	330 CV	530 CV
Engine speed at max. power output	5750 rpm	5750 rpm	6500 rpm
Peak torque	450 Nm	450 Nm	620 Nm
Engine speed at peak torque	2000 - 4000 rpm	2000 - 5000 rpm	3000 - 5500 rpm
<b>TRANSMISSION</b>			
Transmission	Automatic 8 gears	Automatic 8 gears	Automatic 8 gears
<b>PERFORMANCE</b>			
Maximum speed	240 km/h	240 km/h	285 km/h
Acceleration (0 - 100 km/h)	5.6 s	5.3 s	3.8 s
Stopping distance (100 - 0 km/h)	<40 mt	<40 mt	<40 mt
Fuel consumption (Combined cycle)	8.7 - 9.2 l/100 km	8.8 - 9.3 l/100 km	11.2 l/100 km
Fuel consumption (Low cycle)	13.1 - 13.2 l/100 km	13.1 - 13.2 l/100 km	17.4 l/100 km
Fuel consumption (Medium cycle)	8.6 - 9.2 l/100 km	8.7 - 9.2 l/100 km	11.6 l/100 km
Fuel consumption (High cycle)	7.4 - 7.8 l/100 km	7.4 - 8 l/100 km	9.3 l/100 km
Fuel consumption (extra-High cycle)	8.4 - 8.8 l/100 km	8.4 - 9 l/100 km	10.3 l/100 km
CO <sub>2</sub> emissions (Combined cycle)	198 - 208 g/km	199 - 210 g/km	254 g/km
CO <sub>2</sub> emissions (Low cycle)	297 - 300 g/km	297 - 300 g/km	394 g/km
CO <sub>2</sub> emissions (Medium cycle)	194 - 208 g/km	196 - 209 g/km	263 g/km
CO <sub>2</sub> emissions (High cycle)	167 - 177 g/km	168 - 180 g/km	211 g/km
CO <sub>2</sub> emissions (extra - High cycle)	190 - 199 g/km	191 - 204 g/km	233 g/km
Regulation	Euro 6D Final	Euro 6D Final	Euro 6D Final

Data corresponds to tests executed in compliance with Regulation (EU) 2017/1151, updated as of July 2021. Check MY22 Maserati Connect availability in your Country.



Grecale GT





MM

*Maserati*

*A world* of possibilities



### **Master Maserati Driving Courses**

There cannot be a Maserati driver in the world who hasn't wondered what it must be like to push the rev counter into the red right up through the gears, to take the racing line through a corner and to test their car's braking capabilities to their limit. The Master Maserati Driving Experience answers all these questions and more through a series of professionally-led courses for those with a desire to discover the performance potential of the fastest Maserati models in their natural environment: the racetrack. With the introduction of the sensational MC20 supercar and the powerful Trofeo versions of Ghibli and Levante, the Master Maserati Driving Experience becomes even more dynamic and thrilling. For full details on our driving experiences, you can visit our website [mastermaserati.com](http://mastermaserati.com) or contact us directly at [info@mastermaserati.it](mailto:info@mastermaserati.it).

### **Financial Services**

Purchasing your car with the aid of a Maserati financial package enables you to choose the best conditions on the market and tailor them to your needs. Official Maserati dealers will be delighted to act as your financial advisers, providing professional guidance on the various payment options available and creating a package tailored to your requirements.

### **Road Assistance Program**

The Maserati Assistance Program offers an exclusive range of services and benefits free of charge for the entire warranty period of the vehicle. The Assistance Centers, available 24 hours a day, can be contacted in emergency situations. At these efficient sites, courteous and highly skilled professionals will provide the best possible solution to any problem flagged by the customer.

### **Full Credit Services\***

Stay on the road while your car is being repaired – with our Full Credit Services, you will be behind the wheel of a courtesy car with Geo maps, snow chains and child seats included: free of charge so you can focus on enjoying the drive.

\*For more information, please contact your dealer or Maserati Customer Service at [info@maserati.com](mailto:info@maserati.com).







## The World of the *Trident*

### **Factory Tour**

Discover the heart of the all new MC20's production at the historical Maserati Plant in Modena. The 1h45min Factory Tour begins with a walkthrough of the Brand's heritage and model range presentation. Assembly line, Engine Lab, Painting facilities and the Official Store follow.

Showroom Tour: a 40-minute Showroom tour comprehensive of heritage and model range presentation is available. For more information contact: [factorytour@maserati.com](mailto:factorytour@maserati.com).

### **Factory Delivery**

After a welcome coffee and drinks in the Showroom, you can visit the historical Maserati Plant, accompanied by a specialist guide and a photographer. Now, it's time for your new Maserati unveiling. Before we bid you farewell, the final pictures are taken. The commemorative digital photo-album is forwarded to the customer. All models can be delivered at the Modena Plant. Request the factory delivery to your official Maserati dealer.

### **Maserati Collection**

The Maserati Collection of exclusive leisurewear and branded merchandise has been specially created for those with a passion for all things Maserati. Maserati Collection items are available from all Maserati dealers and the Maserati Store at the Modena showroom. Alternatively, they can be purchased online at [maseratistore.com](http://maseratistore.com) and delivered directly to your home.

### **Maserati Club**

There are currently more than 30 Maserati Clubs in the world, counting more than 3,000 members. Joining the exclusive

Maserati Club means sharing insights, experiences and all the excitement with other Maserati owners – and being invited to take part in special motoring events. Drivers of cars from every era can enjoy the pleasure of driving their Maserati models in a calendar of national & international events created especially by the Maserati Clubs for their Club members, such as the Global Gathering or the Maserati International Rally. Visit the dedicated section in [maserati.com](http://maserati.com) to find the contacts of your local Maserati Club.

### **Maserati Genuine Accessories**

Specially conceived to satisfy our customers' needs, the Maserati Genuine Accessories are a perfect combination of design, functionality, comfort and performance. Built to the highest standards of Maserati craftsmanship, the Grecale accessories range has been developed to guarantee great practicality together with the chance to add your personal and unique touch. Get ready to discover all your customization options in the dedicated brochure, on the official website [maserati.com](http://maserati.com), or through the Official Maserati Network.

### **Customer Programs**

Driving a Maserati is an experience of a lifetime, regardless if you are handling a weekday commute or embarking on a memorable journey. This is why Maserati has created dedicated Customer Programs to guarantee you, mile after mile, the utmost care and excellent performance of your Grecale. Give yourself extra peace of mind with our programs. Discover more on the official website [maserati.com](http://maserati.com), or through the Official Maserati Network.



### **Archivio Storico**

Created for enthusiasts and owners of vintage Maserati cars, 'Archivio Storico' is an organization dedicated to those who wish to engage with the marque's glorious past. 'Archivio Storico' can provide Maserati Customers a service of Historical Documentation pertaining to their vehicles. More precisely, there are various types of certified historical documents available, carefully and precisely researched within the Maserati Historical Archive. For more information about the Historical Documentation service, email [archivio.storico@maserati.com](mailto:archivio.storico@maserati.com).

### **Maserati Classiche**

At the beginning of a new era, Maserati pays tribute to its past by creating a new program around its most precious resource: Our History. Maserati Classiche is a new department specifically designed for Maserati's Classic car owners. Maserati Classiche provides our customers several dedicated services regarding the Certification of Authenticity, components for Classic cars and support for restoration. For additional information related to the Maserati Classiche Program, please contact Us by emailing [maserati.classiche@maserati.com](mailto:maserati.classiche@maserati.com).

## Worldwide Contacts

### **Europe:**

Mail: [info@maserati.com](mailto:info@maserati.com)  
Phone: 00 800 62737284 (toll free)  
+390244412899

### **Americas:**

Mail: [mymaserati@maserati.com](mailto:mymaserati@maserati.com)  
Phone: 877-696-2737 (toll free)

### **Middle East:**

Mail: [Customercare\\_mea@maserati.com](mailto:Customercare_mea@maserati.com)

### **China:**

Phone: 400-688-51-11 (toll free)  
021-61210200

### **Japan:**

Mail: [info.japan@maserati.com](mailto:info.japan@maserati.com)  
Phone: 0120-965-120 (toll free)







The illustrations and texts contained in this catalog are based on the information available at the time of production. Some models, features and accessories may not be available or may only become available after the car's launch on the market or within the Fuoriserie program. Maserati reserves the right to modify colors, designs and technical features at any time and without prior notice. Official Maserati Dealers will be glad to provide further details and updates in this regard. Stay in touch with Maserati by visiting [maserati.com](https://www.maserati.com)





[maserati.com/grecale](https://www.maserati.com/grecale)